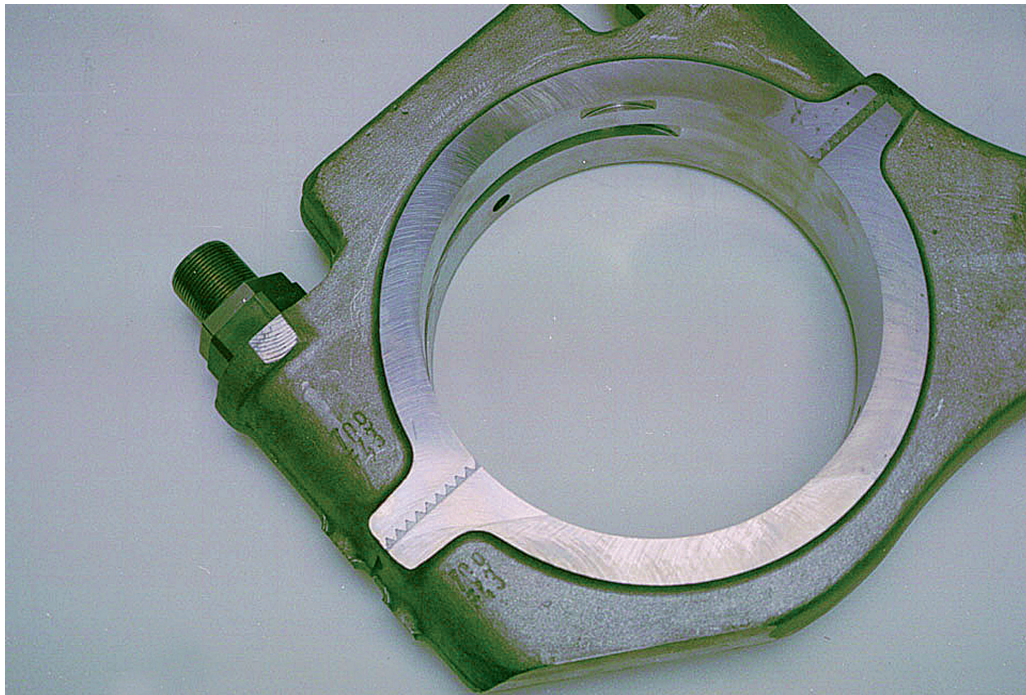
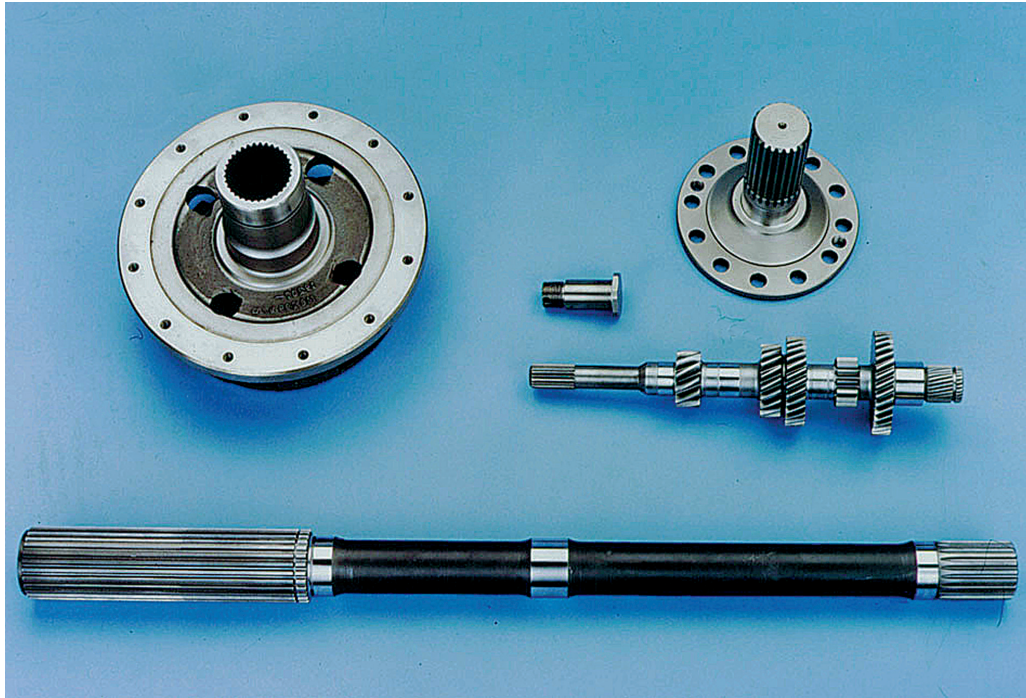




## Shot peening and fretting



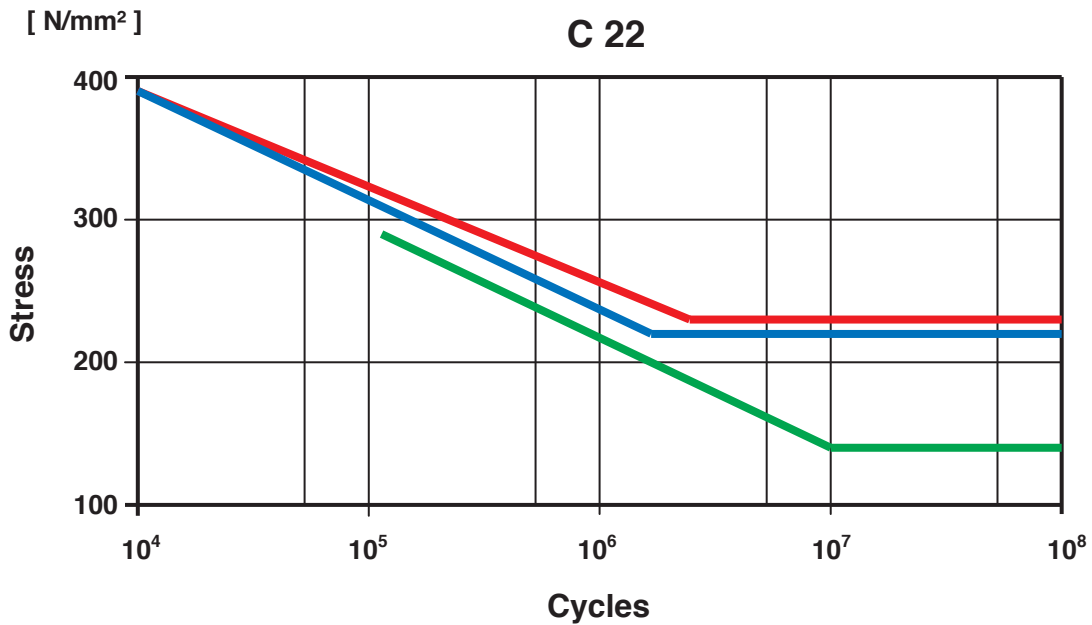
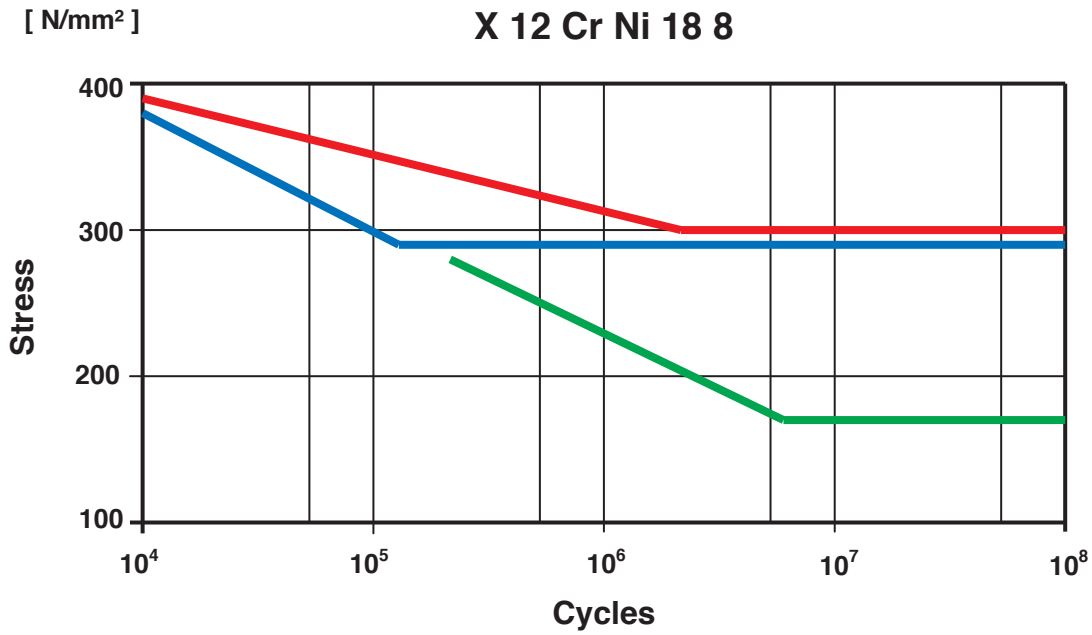
### **Fretting corrosion, fretting wear and fretting fatigue**

If a slight relative motion of microscopic amplitude between two surfaces occurs, fretting develops from wear in this area.

Shot peening increases the surface hardness, induces a residual compressive stress layer and produces a surface topography with tiny pockets which act as oil reservoirs, which in turn retards fretting and fretting fatigue.



# Shot peening and fretting



	= no fretting, not shot peened
	= fretting fatigue, not shot peened
	= fretting fatigue, shot peened

